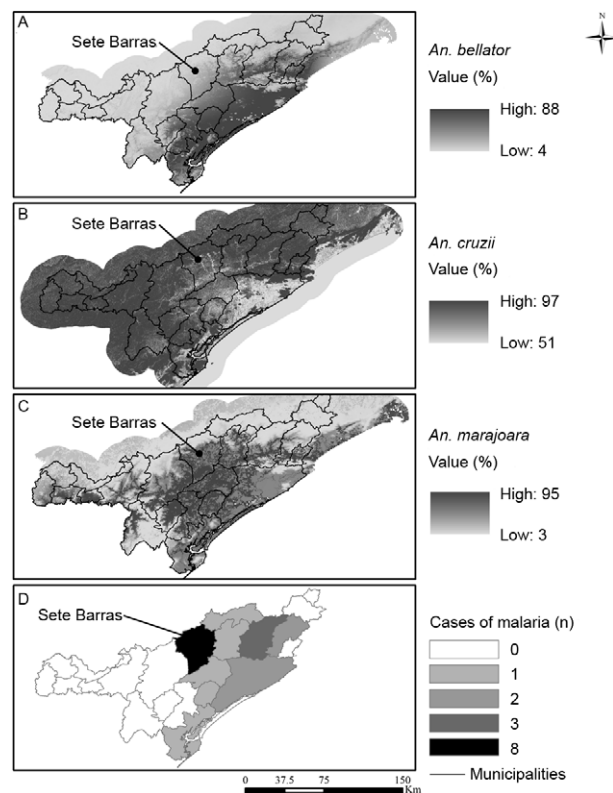


TABLE

The mean and standard deviations of the number of mosquitoes monthly collected per species and collection site in the south-eastern Atlantic Forest of Brazil

Sites	<i>Anopheles bellator</i>	<i>Anopheles cruzii</i>	<i>Anopheles marajoara</i>
BoqN	1.50 ± 1.62	16.17 ± 5.25	10.50 ± 4.17
BoqS	149.67 ± 17.08	42.42 ± 11.24	1.75 ± 1.55
CanSJ	43.58 ± 8.03	37.83 ± 10.18	0.33 ± 0.49
CanT	26.34 ± 7.20	229.25 ± 19.24	0.00 ± 0.00
FazE	0.00 ± 0.00	29.33 ± 9.86	0.75 ± 0.75
S_Ga	0.92 ± 1.17	50.92 ± 9.62	0.00 ± 0.00
Ica_I	3.00 ± 2.26	45.25 ± 10.53	0.00 ± 0.00
Par	0.00 ± 0.00	1.17 ± 1.47	0.00 ± 0.00
V_M	0.00 ± 0.00	0.00 ± 0.00	0.00 ± 0.00

mosquito collection sites: BoqN: Ilha Comprida (North); BoqS: Ilha Comprida (South); CanSJ: Cananéia; CanT: Sítio Itapuã; FazE: Fazenda Experimental; S_Ga: Sítio Galiléia; Ica_I: Icapara; Par: Pariquera-Mirim; V_M: Vila Maria.



Anopheles bellator (A), *Anopheles cruzii* (B), *Anopheles marajoara* (C) potential habitat suitability maps, and cases of malaria (D) in the south-eastern Atlantic Forest of Brazil. Potential habitat suitability of *An. cruzii* is beyond the slopes of Serra do Mar.