

TABLE I
Phlebotominae specimens collected from household units (HUs) and gallery forests in Palmas, Tocantins, Brazil, in July (the dry season) of 2014 and determined to be positive for infection based on SSU rDNA and ITS1 markers

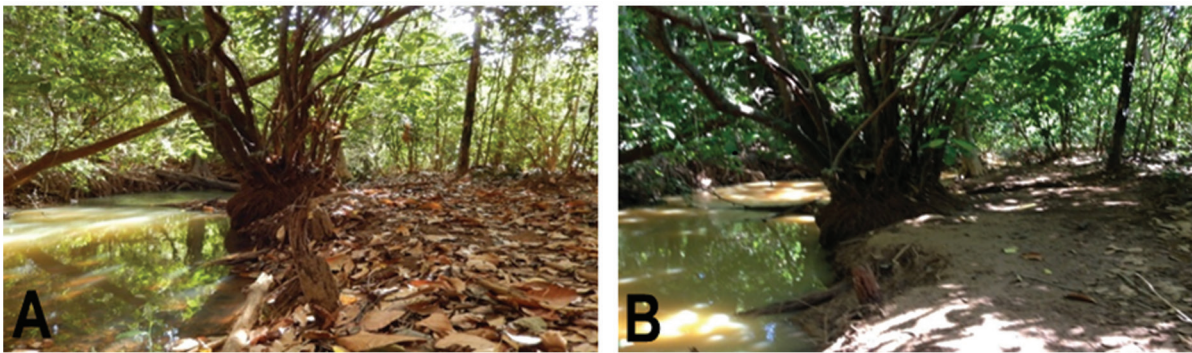
Species	Household Units				Gallery forests			
	N°*	Pools	Nested SSU-PCR	ITS1-PCR	N°*	Pools	Nested SSU-PCR	ITS1-PCR
<i>Bichromomyia flaviscutellata</i>	1	1	0	0	74	12	0	0
<i>Brumptomyia</i> sp.	0	0	0	0	3	1	0	0
<i>Evandromyia carmelinoi</i>	15	5	0	0	3	2	0	0
<i>Evandromyia saulensis</i>	0	0	0	0	5	1	0	0
<i>Evandromyia walkeri</i>	0	0	0	0	15	4	0	0
<i>Lutzomyia longipalpis</i>	8	6	1	0	2	2	1	0
<i>Micropygomyia villelai</i>	3	3	0	0	0	0	0	0
<i>Nyssomyia whitmani</i>	30	14	4	1	380	42	3	0
<i>Pintomyia christenseni</i>	0	0	0	0	11	2	1	0
<i>Psathyromyia aragaoi</i>	0	0	0	0	4	1	0	0
<i>Psathyromyia hermanlenti</i>	4	3	1	0	59	9	0	0
<i>Psychodopygus davisi</i>	0	0	0	0	2	1	0	0
<i>Sciopemyia sordellii</i>	4	2	0	0	4	2	0	0
Total	65	34	6	1	562	79	5	0

*: number of specimens.

TABLE II
Number of Phlebotominae samples collected from household units (HUs) and gallery forests in Palmas, Tocantins, Brazil, in November (the rainy season) of 2014 and determined to be positive for infection based on SSU rDNA and ITS1 markers

Species	Household Units				Gallery forests			
	N°*	Pools	Nested SSU-PCR	ITS1-PCR	N°*	Pools	Nested SSU-PCR	ITS1-PCR
<i>Bichromomyia flaviscutellata</i>	0	0	0	0	2	2	1	0
<i>Evandromyia carmelinoi</i>	25	6	0	0	2	1	0	0
<i>Evandromyia evandroi</i>	5	1	0	0	0	0	0	0
<i>Evandromyia lenti</i>	5	2	0	0	0	0	0	0
<i>Evandromyia sallesi</i>	3	1	0	0	0	0	0	0
<i>Evandromyia termitophila</i>	2	1	0	0	0	0	0	0
<i>Evandromyia walkeri</i>	10	6	0	0	2	1	1	0
<i>Lutzomyia longipalpis</i>	10	3	1	0	0	0	0	0
<i>Micropygomyia rorotaensis</i>	4	2	0	0	0	0	0	0
<i>Nyssomyia whitmani</i>	48	9	0	0	1	1	0	0
<i>Pintomyia christenseni</i>	3	3	1	0	0	0	0	0
<i>Psathyromyia campograndensis</i>	0	0	0	0	2	1	0	0
<i>Psychodopygus davisi</i>	0	0	0	0	1	1	0	0
Total	115	34	2	0	10	7	2	0

*: number of specimens.



Photographs showing difference in the gallery forests during dry and rainy months in Palmas, Tocantins, Brazil. (A) July (dry month) with presence of dry leaves and higher organic matter in the soil. (B) November (rainy month).