

## *Dichelacera (Dichelacera) corumbaensis* n. sp. (Diptera: Tabanidae) from the State of Mato Grosso do Sul, Brazil

Antonio Thadeu M Barros, Inocência S Gorayeb\*

Centro de Pesquisa Agropecuária do Pantanal/EMBRAPA, Rua 21 de Setembro 1880, 79320-900 Corumbá, MS, Brasil \*Museu Paraense Emílio Goeldi, Av. Magalhães Barata 376, 66017-970 Belém, PA, Brasil

*Dichelacera (Dichelacera) corumbaensis* n. sp. is described from two female specimens collected in the urban area of Corumbá city, State of Mato Grosso do Sul. This is one of the six species of *Dichelacera* occurring in the state and the twenty-eighth species of the subgenus known from Brazil. The head in lateral view, frons, antenna, palpi and wings are illustrated. A differential diagnosis is given related to *D. rubricosa*, *D. unifasciata*, *D. albifasciata* and *D. fuscipes*.

Key words: taxonomy - Tabanidae - Diptera - Diachlorini - *Dichelacera corumbaensis* n. sp.

The subgenus *Dichelacera* of the neotropical genus *Dichelacera* Macquart was revised by Fairchild and Philip (1960), who included 53 species. Fairchild (1964) described *D. amilcar* and Philip (1976) described *D. brevidens*, *D. quaesita* and *D. xanthas*. In their catalog Fairchild and Burger (1994) listed 52 species for the Americas South of the United States. Henriques (1993) described four more: *D. amazonensis*, *D. paraensis*, *D. striata* and *D. tetradelta*. Twenty seven of these species occur in Brazil and five occur in the State of Mato Grosso do Sul. This paper presents the description of *Dichelacera (Dichelacera) corumbaensis* n. sp. collected during studies on Tabanidae carried out by the "Centro de Pesquisa Agropecuária do Pantanal/EMBRAPA".

*Dichelacera (Dichelacera) corumbaensis* n.sp.  
(Figs 1-5)

Medium sized species with dark brown dorsal aspect contrasting with the pale first tergite, pale posterior bands on tergites 3-6 and faint white-yellowish pollinose stripes on the anterior third of the mesonotum. Ventral aspect yellowish under thorax and brown under abdomen. Antennal tooth reaching the end of the basal plate. Frontal callus wider than high and as wide as frons, with a short slender median upper prolongation.

*Female*: length 8.6 mm, wing length 8.3 mm, wing width 2.8 mm.

*Head* (Fig. 4): glabrous eyes. Frons (Fig. 1) parallel sided, 1.1 mm high, 0.6 mm wide and frontal index 2.0. Frontal callus dark brown coloured, slightly inflated, as wide as frons and wider than high, with a short slender median upper prolon-

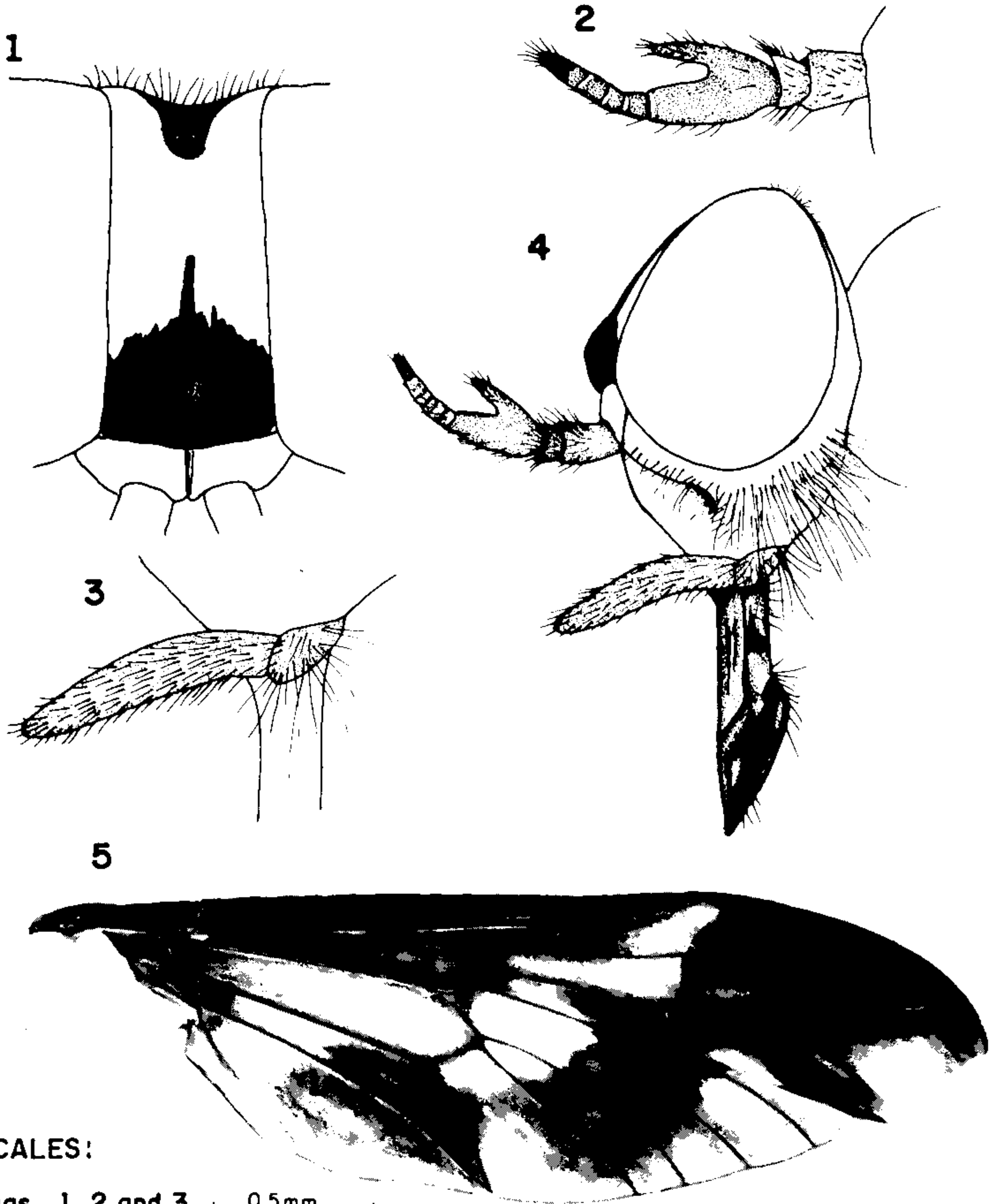
gation reaching the middle of the frons. Vertex formed by a shiny brown triangular area. Other parts of frons with pale white-yellowish pollinosity. Subcallus, gena, frontoclypeus bearing white-yellowish pollinosity as the frons and light brown hairs. Antenna (Fig. 2), scape and pedicel yellow with slight white pollinosity and dark hairs, flagellum yellowish to orange with dark hairs and last annulus black. Palpi (Fig. 3) with the same color pollinosity and pilosity as the scape and pedicel. Proboscis brown with a black shiny labella and dark hairs.

*Thorax*: mesonotum and scutellum brown with brown hairs; anterior half of mesonotum lighter, white-yellowish pollinosity denser at two faint sublateral stripes. Lateral margins of mesonotum, pronotal lobe, humeral callus, and post-alar lobe with white-yellowish pollinosity. Pleura yellow with white-yellowish pollinosity and dominant pale hairs on mesepisternum and mesokatepisternum. Coxae with the same color as pleura; fore coxa pale pilose on the proximal third and brown pilose on the rest; middle and hind coxae brown haired. Legs brown, dark pilose. Wing (Fig. 5) with a dark pattern extending over the cells: costal; subcostal; stigma area and apex of the marginal; 1st basal; base and apical half of the 1st submarginal; 2nd submarginal; base, middle and apex of the 1st posterior; base and distal third of the discal; proximal and distal third of the 2nd posterior; 3rd posterior; distal 2/3 of the 4th posterior; base, distal 2/3 and posterior margin of the 5th posterior; base and distal third of the anal; distal 2/3 of the sub-anal and anal lobes.

*Abdomen*: tergite 1 with yellow collar, pollinosity and pilosity similar to pleura, contrasting with the other tergites that are predominantly dark brown and dark haired. Tergites 3-6 with distal bands of yellow tegument and white-yellowish

pollinosity and pilosity. Tergites 2-7 brown with dark hairs and a faint band of pale pollinosity. Sternites dark brown; sternites 2-4 with pale pilosity dominant and 5-7 with dark pilosity.

*Types:* Holotype: female, CPAP/EMBRAPA, Corumbá (19°00'S, 57°39'W), Mato Grosso do Sul, BRASIL, 20-XI-1992; ATM Barros col. Paratype: female, Corumbá, Mato Grosso do Sul,



**SCALES:**

Figs. 1, 2 and 3  0,5mm

Fig. 4  1mm

Fig. 5  3mm

*Dichelacera (Dichelacera) corumbaensis* n. sp., female. Fig. 1: frons. Fig. 2: antenna. Fig. 3: palpi. Fig. 4: head. Fig. 5: wing.

BRASIL, XII-1991, CFM Campos col. Both types are deposited at entomological collection of the "Museu Paraense Emílio Goeldi", Belém, Pará, Brazil (without number).

*Etymology*: the specific name refers to the city of Corumbá, Mato Grosso do Sul, Brazil, the collection site of the types.

#### REMARKS

*D. corumbaensis* n. sp. is closely similar to *D. fuscipes* Lutz but can be separated from that species by the wing, which has a better defined fascia covering all the 1st basal cell and the apex veins of the 2nd basal cell. It can be separated from *D. rubricosa* (v.d. Wulp) by the longer antennal tooth. *D. unifasciata* Macquart presents hairs on eyes, which are glabrous on the new species. The new species differs from *D. albifasciata* Fairchild & Philip by the longer size, longer antennal tooth and labella of the proboscis longer and entirely sclerotized.

#### ACKNOWLEDGEMENTS

To Antônio Seabra Martins who draw the figures. To David C Oren for assistance in the translation to English.

#### REFERENCES

- Fairchild GB 1964. Notes on Neotropical Tabanidae (Diptera) IV. Further new species and new records for Panama. *J Med Ent* 1: 169-185.
- Fairchild GB, Burger JF 1994. *A Catalog of the Tabanidae (Diptera) of the Americas South of the United States*. Memoirs of the American Entomological Institute # 55, Associated Publishers. 249pp.
- Fairchild GB, Philip CB 1960. A revision of the Neotropical genus *Dichelacera*, subgenus *Dichelacera*, Macquart (Diptera: Tabanidae). *Stud Entomol* 3: 1-86.
- Henriques AI. 1993. Tabanidae (Diptera) da Amazônia. XII. Descrição de quatro espécies novas de *Dichelacera* (*Dichelacera*) Macquart. *Bol Mus Para Emílio Goeldi sér. Zool.* 9: 219-228.
- Philip CB 1976. New North American Tabanidae (Diptera). XXII. New species in the tribe Diachlorini in Mexico. *The Wasmann Journal of Biology* 34: 43-51.